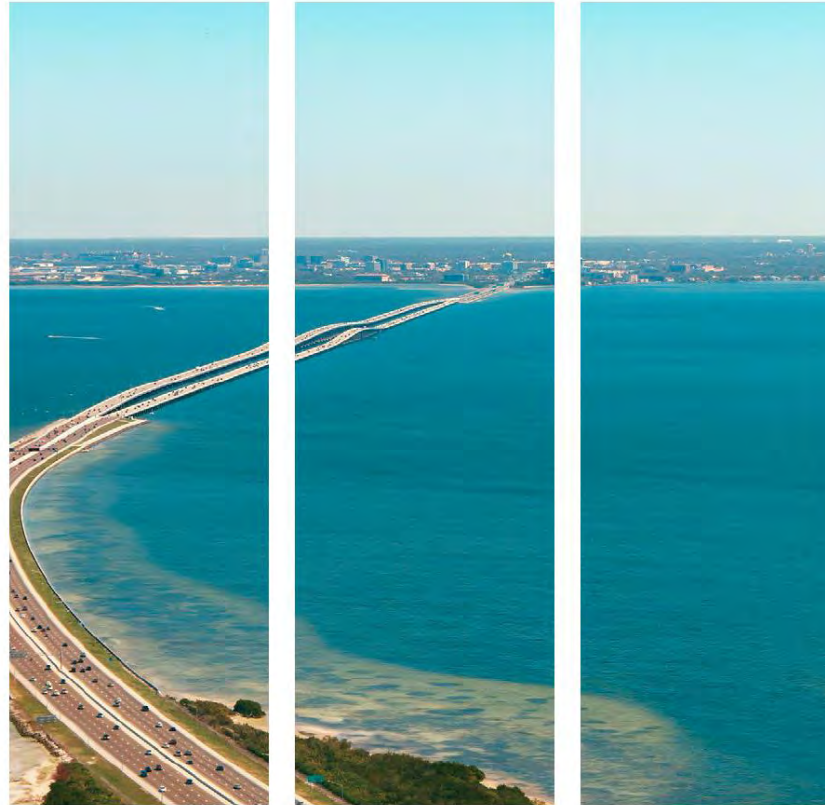


Insights and Suggestions from a CCMP Revision Survivor



CHARTING THE COURSE:

THE COMPREHENSIVE
CONSERVATION
AND MANAGEMENT PLAN
FOR TAMPA BAY

AUGUST 2017 REVISION



Importance of a CCMP

- A community plan for bay restoration and protection
- Blueprint for the next 10 years
- Highlights consensus-based priority issues and actions
- Used to guide Annual Workplans
- Identifies key partners for each Action
- Timelines



What worked for us: background details



Opinion poll distributed as widely as possible



Review, reduce and add to existing actions



Agreement to 'Roadmap' of the revised CCMP



Develop schedule for action review and preliminary approval.



Formatting: consider online full version; printed summary



Keep it interesting: lots of graphics, photos, maps, stories



Consider including a graphic timeline.

Consider conducting an opinion poll early



Simple online opinion poll to gauge public perception of the state of Narragansett Bay; what they perceive as the most important factors contributing to its present state; and what are the most important factors for the future.



Can also enlist their help in reviewing CCMP actions by including a check box and email/Facebook if they would like to be informed.



Use many venues (websites, social media, etc).

Increase diversity by starting a 'chain email'. Ask your members to forward the link to 5 people who are not already 'in the choir' (family, church, neighbors, clubs, other organizations).

Some
potential
questions:
*Speak Up,
Narragansett
Bay*

Please identify the ways in which you enjoy the bay. (Check all that apply)

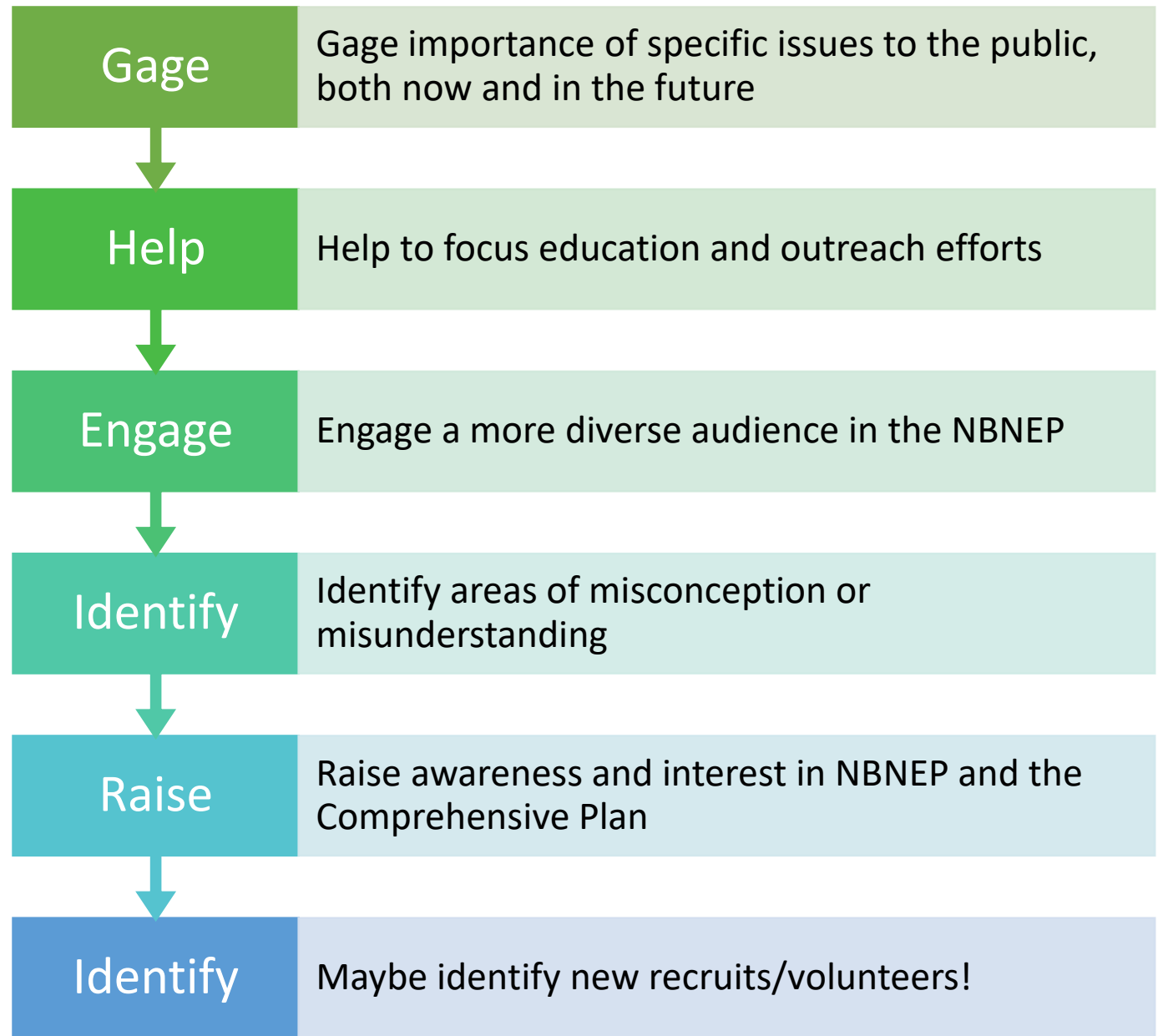
Do you think water quality in Narragansett Bay has gotten better, worse or stayed the same in the time you have lived here?

What do you think is the biggest threat to the bay's health today? (pick one only)

What do you think will be the biggest threat to the bay's health in 10 years? (pick one only)

On a scale of 1 to 5, please rate how pessimistic or optimistic you are that the health of Narragansett Bay will get better in the next 10 years? (with 1 being VERY PESSIMISTIC and 5 being VERY OPTIMISTIC)

Uses of opinion poll results



Review,
reduce, add
to existing
actions

Do this early, to refine existing CCMP Actions

Consider combining, reducing existing actions if appropriate

Add new actions for new issues

Record changes and edits- a requirement for CCMP Revision

Celebrate achievements (action completed) and continue focus on priority actions still to be achieved

The revised Index of Actions will be critical to provide the 'big picture' of the CCMP

WATER & SEDIMENT QUALITY

Actions to improve water quality:

~~WQ-1~~ [Implement the Tampa Bay nutrient management strategy*](#)

~~WQ-2~~ Reduce pollution from recreational boaters
Action moved to Public Health Action Plan in 2017 Revision

~~WQ-3~~ [Reduce frequency and duration of harmful algal blooms](#)
New action in 2017 Revision

Actions to reduce pollution from stormwater runoff:

~~SW-1~~ [Reduce nitrogen runoff from urban landscapes*](#)

~~SW-2~~ Assist businesses in implementing best management practices to reduce pollution, and to develop model landscaping guidelines for commercial use
Action merged into revised SW-1

~~SW-3~~ Encourage local governments to adopt integrated pest management policies and implement environmentally beneficial landscaping practices
Action retired in 2017 Revision

~~SW-6~~ Promote compact urban development and redevelopment
Action retired in 2006 update

~~SW-7~~ Enforce and require the timely completion of the consent order for the cleanup of fertilizer facilities in the East Bay sector
Action retired in 2017 Revision

~~SW-8~~ [Expand adoption and implementation of best management practices for commercial and urban agriculture](#)
Action revised in 2017 Revision

~~SW-9~~ Improve compliance with agricultural ground and surface water management plans
Action retired in 2006 update

~~SW-10~~ [Expand use of Green Infrastructure practices](#)
Action Revised

~~SW-11~~ Expand the Adopt-A-Pond program to additional communities
Action merged into revised SW-1

TBEP example of tracking status of current and past CCMP Actions. Partial screen shot from CCMP Index of Actions

Blue indicates current action in 2017 Revision. These have a live link to the Action write-up.

‘*’ indicates Priority Action

Change in status for actions from earlier CCMPs is noted, but not removed from the Index of Actions. Numbering of actions is sequential within each Action Plan, none of the earlier numbers are removed or replaced.

Change in status included moving to another Action Plan; merged; revised; new action; and action retired.

Agreement to 'roadmap' with EPA

TBEP staff worked with EPA to determine how NEP CCMP Revision and Update Guidelines would be met in the CCMP

Critical for both TBEP staff working on developing the CCMP, and for EPA staff who will be approving the final version. Program Director and the EPA Coordinators (both Regional and HQs) sign off on this document

Staff members change, requirements are revised, so having an agreed-upon Roadmap at the beginning of the process was invaluable. The roadmap provided certainty and clarity to both the program staff and to EPA.

Develop a schedule for review

Consider reviewing a limited number of Actions per quarter .

5-7 actions per quarter allow thorough review by advisory committees, boards and the public.

Staggering the action reviews also allows staff to focus on developing a few actions at one time.

Use the Index of Actions to provide context for the actions in review each quarter, to show how they fit in to the larger list.

Request EPA review and comment of the quarterly actions.

Request 'conceptual approval' of quarterly actions (with any revisions noted during the review process).

After all actions are 'conceptually approved', bring back the full package for final approval.

TBEP example
of timeline:
6 months from
development
to conceptual
approval for 5-
7 Actions

Month 1-2: Develop draft actions

Month 3: Post drafts for review; send to advisory committees, boards and EPA and request written comments

Month 5: Advisory Committees, focus groups meet to review

Month 5.5: Staff revises drafts to address comments

Month 6: Management Board and Policy Board review and conceptual approval

Rolling process, so this process is initiated every 2 months

Formatting considerations

- Consider online for full CCMP; less expensive, allows full color throughout
- Public Summary (~10 pages)- electronic and printed versions
- Make it interesting: graphics, maps, photos, boxes with interviews, stories
- Ensure that each Action is consistent with Roadmap language



WATER QUALITY

Implement the nutrient management strategy for Tampa Bay



OBJECTIVES:

Continue to implement the nutrient management strategy for Tampa Bay to maintain water quality necessary to support seagrass at or above target levels. Document trends in water quality, and track nutrient reduction and prevention actions within the watershed. Develop and implement nutrient criteria recommendations and management strategies for the bay's tidal streams.

STATUS:

Ongoing. The Tampa Bay Estuary Program (TBEF) continues to maintain the Nitrogen Reduction Action Plan Database and prepare Reasonable Assurance documentation for water quality requirements. TBEF further supported: 1) establishment of estimates for atmospheric deposition to Tampa Bay watershed sub basins and waters, 2) establishment of estimates of nitrogen loading from residential fertilizer and irrigation and corresponding nutrient load reductions associated with fertilizer restrictions and 3) development of numeric nutrient criteria recommendations for Tampa Bay.

RELATED ACTIONS:

- AD-1 Continue to reduce nitrogen loading from atmospheric deposition*
- BH-1 Implement the Tampa Bay Habitat Master Plan*
- BH-9 Enhance ecosystem values of tidal tributaries*
- SW-1 Reduce nitrogen runoff from urban landscapes*

At left: Because seagrass requires clear water to flourish, it is a valuable indicator of water quality in Tampa Bay. Photo by Jimmy White.

- SW-10 Expand use of green infrastructure practices*
- SW-8 Expand adoption and implementation of best management practices for commercial and urban agriculture*
- WW-1 Expand the beneficial use of reclaimed water*
- WW-2 Extend central sewer service to priority areas now served by septic systems*
- WW-3 Require standardized monitoring of wastewater discharges*
- WW-5 Reduce the occurrence of municipal sewer overflows to the bay*

BACKGROUND:

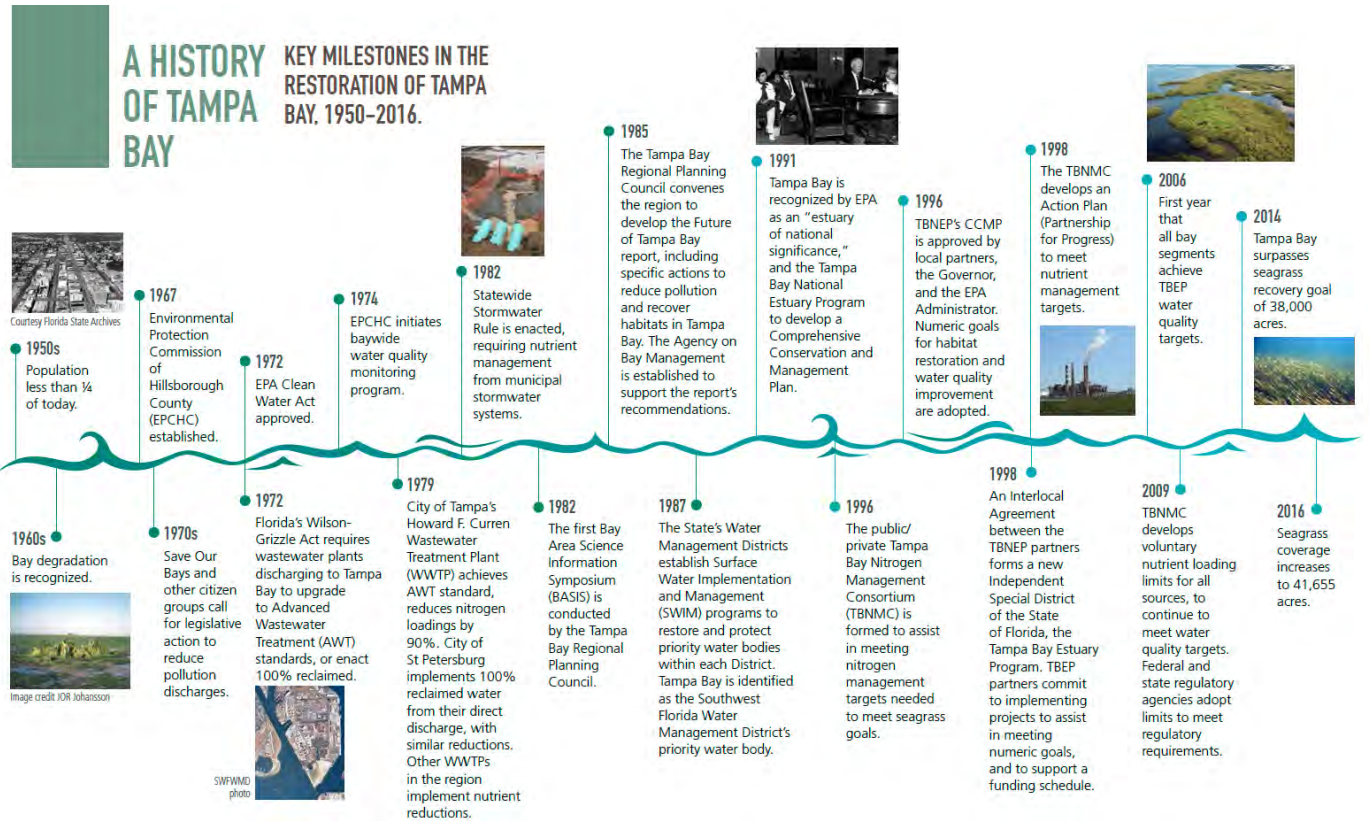
Controlling nitrogen input into the bay as a means to regain vital seagrass beds has been one of TBEF's most prominent initiatives. Seagrasses were selected as a metric by which efforts to improve the bay are measured because of their overall importance as a bay habitat and nursery, and because they are an important barometer of water quality.

In 1995, TBEF adopted a goal of restoring seagrass to 1950 levels after decades of decline. Reaching this goal required collaboration from local governments, industries, and citizens to reduce nutrients throughout the watershed. By June 2016, more than 500 nitrogen load reduction projects had been implemented, resulting in water clarity equivalent to the 1950s period. In 2017, the bay had 41,655 acres of seagrasses, surpassing the original restoration goal (38,000 acres) by more than 3,600 acres.

YEAR	OLD TAMPA BAY	HILLS-BOROUGH BAY	MIDDLE TAMPA BAY	LOWER TAMPA BAY
1978	Blue	Blue	Blue	Blue
1979	Blue	Blue	Blue	Blue
1980	Blue	Blue	Blue	Blue
1981	Blue	Blue	Blue	Blue
1982	Blue	Blue	Blue	Blue
1983	Blue	Blue	Blue	Blue
1984	Blue	Blue	Blue	Blue
1985	Blue	Blue	Blue	Blue
1986	Blue	Blue	Blue	Blue
1987	Blue	Blue	Blue	Blue
1988	Blue	Blue	Blue	Blue
1989	Blue	Blue	Blue	Blue
1990	Blue	Blue	Blue	Blue
1991	Blue	Blue	Blue	Blue
1992	Blue	Blue	Blue	Blue
1993	Blue	Blue	Blue	Blue
1994	Blue	Blue	Blue	Blue
1995	Blue	Blue	Blue	Blue
1996	Blue	Blue	Blue	Blue
1997	Blue	Blue	Blue	Blue
1998	Blue	Blue	Blue	Blue
1999	Blue	Blue	Blue	Blue
2000	Blue	Blue	Blue	Blue
2001	Blue	Blue	Blue	Blue
2002	Blue	Blue	Blue	Blue
2003	Blue	Blue	Blue	Blue
2004	Blue	Blue	Blue	Blue
2005	Blue	Blue	Blue	Blue
2006	Blue	Blue	Blue	Blue
2007	Blue	Blue	Blue	Blue
2008	Blue	Blue	Blue	Blue
2009	Blue	Blue	Blue	Blue
2010	Blue	Blue	Blue	Blue
2011	Blue	Blue	Blue	Blue
2012	Blue	Blue	Blue	Blue
2013	Blue	Blue	Blue	Blue
2014	Blue	Blue	Blue	Blue
2015	Blue	Blue	Blue	Blue
2016	Blue	Blue	Blue	Blue

Water Quality Report Card.
Green: Bay segment met chlorophyll and water clarity targets.
Blue: Bay segment did not meet one of the targets.
Orange: Bay segment did not meet either target.
 SOURCE: TBEF

Consider asking the public/NBNEP committees to assist in developing a timeline: engaging, informative, provides context



Skills and resources



Dedicated staff member (at least half-time); communicator, writer, understands background and history of NB, can oversee CCMP support contracts



Technical, outreach and administrative staff also charged with drafting/assisting with specific Actions and other elements



Consider a background researcher/writer to assist staff (~ \$25K)



Graphic designer for online & public summary documents (~ \$30K)



Quarterly agenda item on Advisory Committees, Management and Policy boards- to review and conceptually approve 5-7 Actions each quarter.

Questions?

Holly Greening

hgreening@coastwisepartners.org

